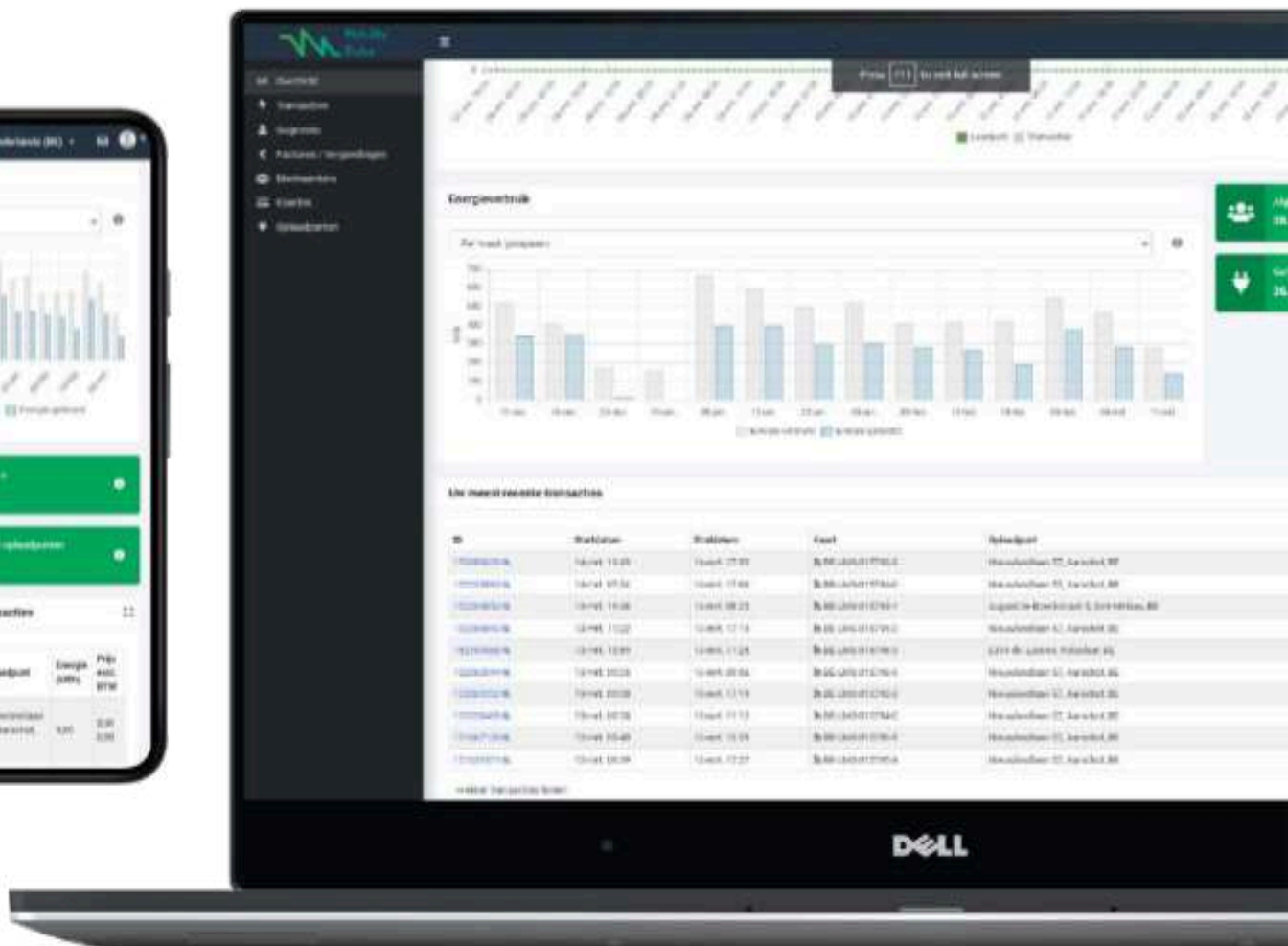




# Mobility Pulse | CP0

2025 V1.2 [EN]



## What exactly is Mobility Pulse and what does it do as a CP0?

As a Charge Point Owner or Operator, you are central to the transition to e-mobility, a market full of opportunities and complexity. To grow successfully, you need a partner who not only provides the technology, but also simplifies the operational and financial burdens.

Expand your network with Mobility Pulse: the most complete, independent platform for charging station management and energy transaction management. We enable you to scale your charging activities and make them future-proof with a foundation of control, flexibility and financial intelligence.

- ☑ **Full management and hardware independence:** Get real-time control over your entire charging network, regardless of the brand or type of charging station. Our hardware-agnostic platform allows you to choose the best hardware, while maximizing uptime and proactively managing maintenance.
- ☑ **Turnkey White-Label Solutions:** Launch and scale your own brand at lightning speed. We offer a fully customizable, ready-to-use solution, including a mobile app, management portal and charging cards in your corporate style, for a quick market introduction.
- ☑ **The Most Complete Billing Engine:** Automate your entire revenue cycle. From invoicing and collection to complex settlements between multiple parties and the final payment; we manage the complete financial flow, risk-free and fully compliant with regulations.
- ☑ **Advanced Energy Management:** Transform your charging points from power consumers into valuable network assets. Implement smart charging and dynamic load balancing to optimize energy costs and prepare for Vehicle-to-Grid (V2G) to unlock new revenue streams.

The goal of Mobility Pulse is to strengthen your charging station management. We simplify the complexity of the energy transition and offer the tools to build a reliable, accessible and profitable charging network. Together we accelerate the growth of sustainable mobility by creating value from every energy transaction.

## Manage your charging point with the Mobility Pulse management system.

- ☑ The Info Dashboard is available for every end user with guaranteed uptime.
- ☑ Every administrator and end customer can manage their own fleet of charging points.
- ☑ A 24/7 service desk and helpline are available.
- ☑ A fully automated billing system that complies with the European SEPA standard and the new EU sales tax rules, guaranteeing billing conformity.
- ☑ Split billing integration.
- ☑ The entire platform is multilingual UK/DE/NL/BE/FR/IT/ES and expandable on request.
- ☑ EU-wide roaming with Hubject / E-Clearing / Gireve / Eviolin.
- ☑ CIR database synchronization. There is a direct connection with other roaming providers.
- ☑ Support for OCHP, OICP, OSCP.
- ☑ OCPI Support. The OCPI protocol will ensure that our end users can also directly access charging points from other suppliers when it comes to statuses and starting and stopping charging sessions via our own platform.
- ☑ Status/Fault notifications are automatically registered and forwarded to the right people.

## Charging Infrastructure Subscription

Subscription choice: (per month)		Single socket	Double socket
<b>Backoffice BASIC</b>	<b>Home</b>	€4.5	€5.5
	<b>Business (semi publiek)</b>	€7.5	€9
	<b>Public</b>	€8	€10
<ul style="list-style-type: none"> <li>• automated billing system</li> <li>• Online/App management of charging points</li> <li>• 24/7 helpdesk</li> <li>• Online necessary firmware update</li> </ul>			
<b>Backoffice OPTIMAL</b>	<b>Home</b>	€9	€10
	<b>Business (semi publiek)</b>	€12	€13,5
	<b>Public</b>	€12.5	€14,5
<ul style="list-style-type: none"> <li>• incl. Backoffice BASIC services</li> <li>• 6 years of free repairs</li> <li>• 6 years of firmware updates</li> <li>• Incl. labor costs, call-out charges</li> <li>• Intervention within 48 hours</li> </ul>			
<b>Backoffice PLATINUM</b>	<b>Home</b>	€14	€15
	<b>Business (semi publiek)</b>	€17	€18,5
	<b>Public</b>	€17.5	€19,5
<ul style="list-style-type: none"> <li>• incl. Backoffice OPTIMAL services</li> <li>• Periodic maintenance</li> <li>• 6 years free replacement if defective</li> <li>• Lifetime firmware updates</li> <li>• Priority on service, malfunctions, and maintenance &amp; Intervention service within 24h</li> </ul>			
(Prices are excl. VAT. Terms apply as long as the subscription is active.)			